

WALL PANEL INSTALLATION

PLEASE FOLLOW THESE INSTRUCTIONS FOR THE BEST INSTALLATION.

This product is only suitable for installation in indoor areas such as commercial and residential, cannot be installed in outdoor.

1. PREPARING MATERIAL AND TOOLS

- Polyurethane Adhesive, Sponge double-sided tape
- Electric drill, Heat gun, Trimming machine, Electric saw, Infrared instrument, Grinder,
- Tape measure, Horizontal measuring ruler
- T&G, Cross thin head self-tapping screws

2. PREPARING BEFORE INSTALLATION

Wall preparation is very important for a successful installation. The better prepared the wall is, the better looking the finished wall panel will be.

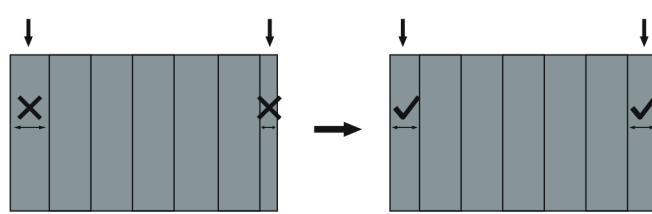
- Wall surface: flatness (within 2 meters) less than or equal to 2mm;
- Wall: perpendicularity less than or equal to 2mm;
- Right angle and round angle: square degree less than or equal to 2mm (Does not affect line installation);
- The wall is firm and dry, no deashing and delamination, clean and no oil.
- Wall panel must be adapted to the current construction environment temperature for more than 24 hours.
- The wall panel should be handled lightly in the process of handling, avoiding damage to the corners, excessive bending.
- Ideal conditions are temperature 15-25 °C and humidity less than or equal to 65%.

Remember, before the construction of the wall must meet this standard!

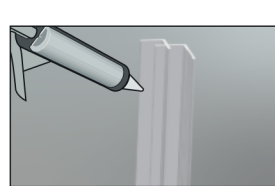
If the wall is not smooth or can not meet the above requirements, it is recommended to find professionals, use woodwork-ing board or etc and smooth (wet area space need to be waterproof).

3. INSTALLATION PROCESS

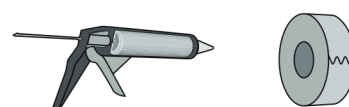
A. Installers measure the length and width of the site wall, cut the required size according to the appropriate cutting method.



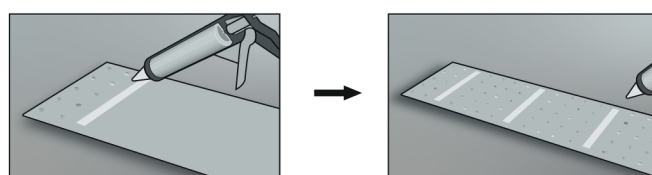
B. If the use of line closing, you need to evenly apply polyurethane adhesive in the inside corner slot and the back. If use glass glue, you can skip to step c and use it to close.



C. 1. Directly paste sponge double-sided tape and polyurethane adhesive on the back of the wall panel.

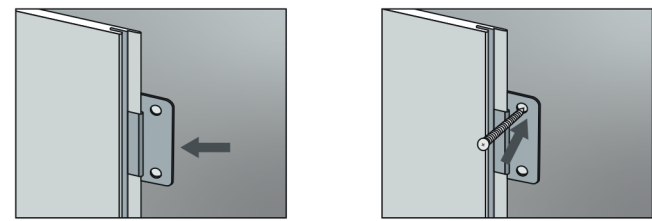


2. Polyurethane adhesive is porcelain white, no tsuen, and no benzene, the distance between the polyurethane adhesive point and the point is 10-20 centimeters, and the glue point should be symmetrical and the number should be the same.



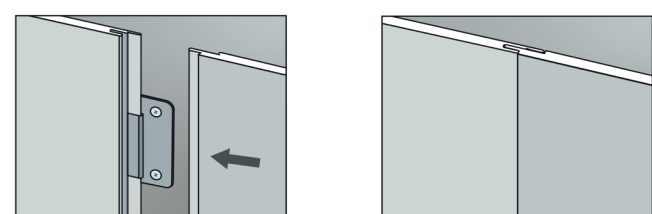
3. Transverse paste the sponge double-sided tape spacing around 50 centimeters and about 5 centimeters from the edge to make the temporary fixation.

D. 1. The wall panel should against the wall and the female mechanism outward. Put the T&G to card the female mechanism of the wall panel and each one spacing around 50 centimeters.



2. Fix the screws.

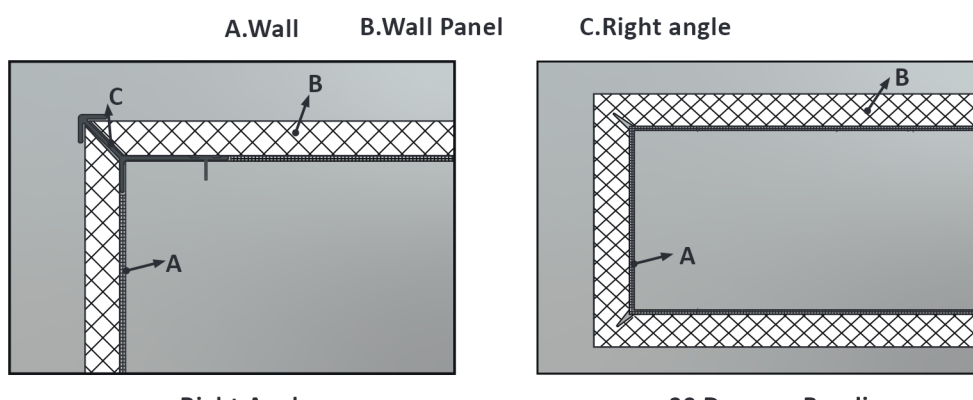
3. Card the male mechanism of the other wall panel into the female mechanism of the previous wall panel in parallel, from left to right installation.



4. NODE PROCESSING

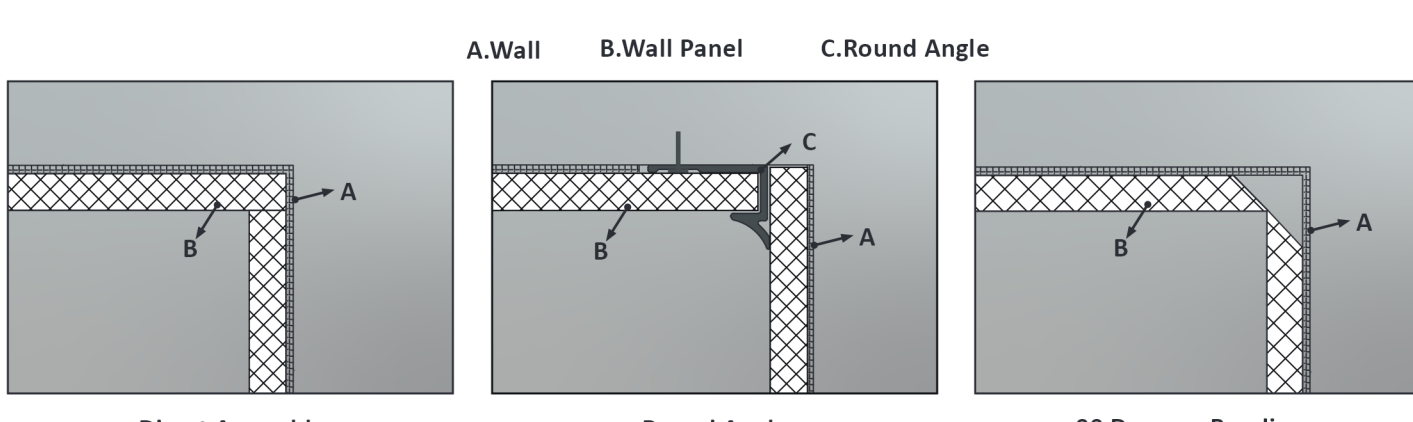
A. Right Angle

- Use the trimming machine to make a 45 degree notch on the right angle edge and insert the sharp right angle, paste polyurethane adhesive inside. (Similar to tile 45° processing)
- 90 degrees bending: Using the plastic characteristics of stone plastic composite wall panel processing.



B. Round Angle

- Choose the round angle and paste polyurethane adhesive inside, then card insert the plate. Two wall panel directly each other then grouting the line.
- 90 degrees bending: Using the plastic characteristics of stone plastic composite wall panel processing.

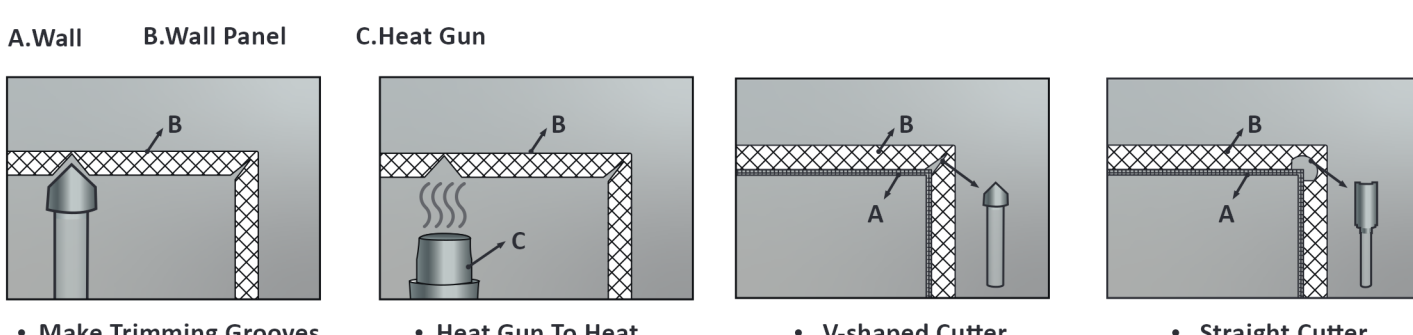


C. 90° bending treatment

- Use the trimming machine to make trimming grooves on the back side of the bending place of the wall panel, reserve the thickness of about 1.0mm (the distance from the surface to the depth of the groove), and then bend after heating.

MATTERS NEEDING ATTENTION:

- Use the heat gun to heat (the heating part becomes soft) before bending. Please control the heating temperature, easy to bend, don't overheat.
- The best bending effect is around 1.0mm thickness. If you use V-shaped cutter head, the effect is right angle, if you use a straight cutter head with a small curved round angle.
- Bend once in place, don't bend repeatedly.



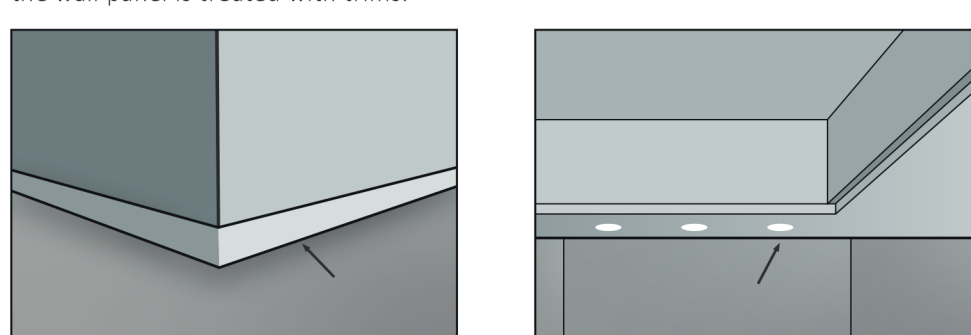
D. Wire switch, water pipe interface incision treatment

- The wall with opening holes or grooving should also paste two rings of polyurethane adhesive accordingly to water and packing anti-buckling (prevent the wall panel from buckling when fastening screws)



E. Wall, floor, top node processing

- Upper side wall panel treatment, mainly using the top line, the top line of the grouting, or gypsum line to closing the edge.
- The lower side of the wall panel is treated with trims.



5. MATTERS NEEDING ATTENTION:

- Pay attention to bump and damage when handing. It is necessary for two people to carry along the width of the long side or a person to carry, it can be properly bent into the elevator because of the material characteristics of the stone plastic composite wall panel.
- Daily cleaning: Use a dust, a vacuum cleaner or a clean dry rag to clean the surface of debris or gravel regularly avoid scratched. Pls careful that the water doesn't seepage if you use a wet rag.
- It is forbidden to use hard and rough cleaning tools to prevent scratching the surface of the wall panel.
- Avoid using the strong acid and alkali solutions. Avoid using cleaners containing acidic or alkaline ingredients when cleaning because it will damage the gloss and wear resistance of the wall panel surface.
- Avoid direct sunlight. Avoid prolonged exposure to sunlight to prevent color fading and deformation. Install curtains or blinds in sunny areas to block the sun.